

5-10 t G系列

内燃平衡重式叉车

G SERIES INTERNAL COMBUSTION
COUNTERBALANCED FORKLIFT TRUCK



 **G series** / 智能·环保 INTELLIGENT
ENVIRONMENT-FRIENDLY

HELI
LIFTING THE FUTURE



连续23年叉车产销量中国第一
TOP1 FORKLIFT MANUFACTURER AND SALER
IN CHINA FOR CONSECUTIVE 23 YEARS



G系列内燃平衡重式叉车
G SERIES INTERNAL COMBUSTION
COUNTERBALANCED FORKLIFT TRUCK

5-10 t

G series / 智能·环保 INTELLIGENT
ENVIRONMENT-FRIENDLY

八大技术特性显著提升

technical features remarkably improved

减震 Damping

- > 护顶架（驾驶室）全悬浮式减震设计和动力系统震动传递的优化设计；降低整车的振动，减轻驾驶员疲劳程度。
- > Suspension damping structure of the overhead guard (cab) and optimized vibration transmission of the power system reduce whole truck vibration and driver's fatigue.

降噪 Noise reduction

- > 全密封驾驶室与发动机周边附件优化设计，降低驾驶员耳边噪音及整车声功率级；
- > Noise around ear and truck sound power level are reduced by full sealed cab and optimal design of the parts around engine.

散热 Heat dissipation

- > 散热系统合理优化，冷却性能大幅提升，从而提高变速箱、发动机等关键零部件的可靠性、耐久性；
- > The reliability and durability of key parts such as transmission box and engine are improved by optimized cooling system and improved cooling performance.

节能降耗 Energy efficiency

- > 采用优化设计的液压系统，凸显节能高效，有效降低整车的燃油消耗；
- > Optimized hydraulic system has high efficiency and effectively reduces fuel consumption.



舒适性 Comfort

- > 融入交互式人机工程设计，提升操作舒适性；配备宽视野起重系统，改善视野；
- > Man-machine engineering design improves operation comfort; wide view lifting system improves vision.

智能换挡 Intelligent gear shifting

- > 整车标配电液换向系统，操作省力、方便；升级全新智能换挡系统，防止二档起步，提高变速箱的工作可靠性；
- > Standard configuration of electric-hydraulic reversing system has light and easy operation; updated new intelligent gear shifting system avoiding start with second gear improves transmission box's reliability.

维护性 Maintainability

- > 车体内部空间更宽敞，零部件位置布置更合理，机罩开启角度增大至80°，整机维修性更佳；
- > Wider internal space, more reasonable parts layout and 80°hood opening angle make maintenance easy.

可靠性 Reliability

- > 车架、门架等核心结构件采用CAE正向设计，使其强度大幅提升，整车更坚固；
- > Key parts like frame and mast apply CAE top-down design to improve their strength and make the truck tough.



独立集成电控箱
Independent integrated electric cabinet



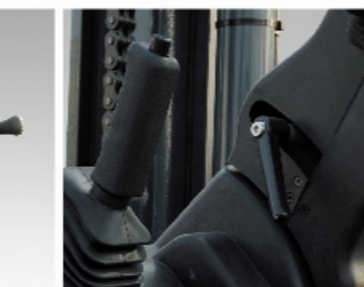
标配LED信号灯
LED signal (standard configuration)



棘齿式停车制动器
Ratchet type parking brake



智能换挡
Intelligent gear shifting



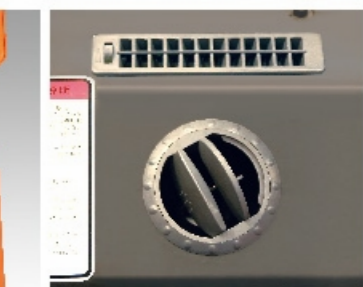
方向盘锁紧机构
Steering wheel lock mechanism



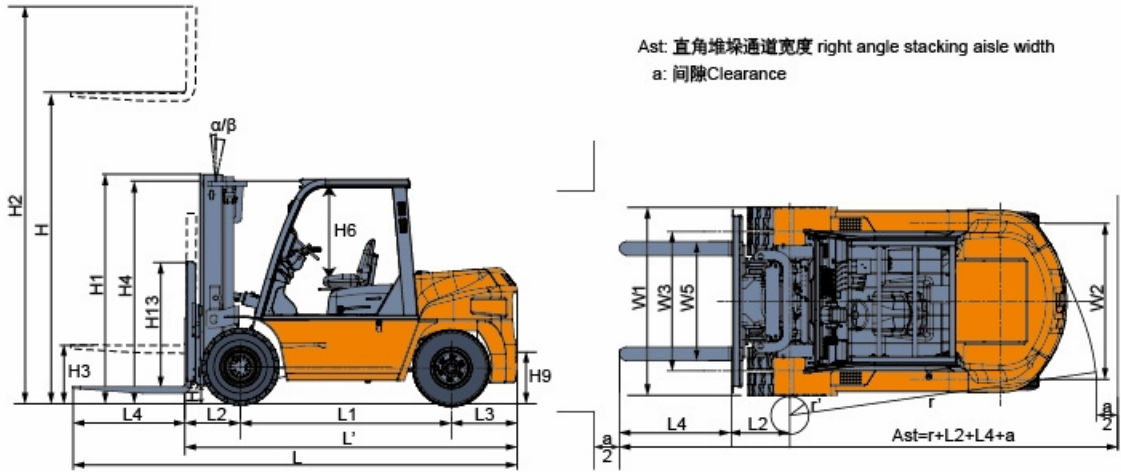
燃油箱盖带锁
Fuel tank cover with lock



文件夹
Folder



内置式暖风机（选配）
Built-in heater(optional)



5-7t宽视野基本型门架 5-7t WIDE VIEW MAST

门架型号 Mast model	最大起升高度 Max. lifting height mm	承载能力 (载荷中心为600mm) (Kg) Load capacity (load center 600mm)			门架全高(货叉落地)(mm) Overall mast height (at lowered)	自重 (kg) Service weight			门架倾角 Mast tilt angle (°) α/β
		CPCD50	CPCD60	CPCD70	CPCD50/60/70	CPCD50	CPCD60	CPCD70	
M200	2000	5000	6000	7000	2000	8300	9050	9650	6/12
M250	2500	5000	6000	7000	2250	8360	9110	9710	6/12
M270	2700	5000	6000	7000	2350	8390	9140	9740	6/12
M300	3000	5000	6000	7000	2500	8440	9190	9790	6/12
M330	3300	5000	6000	7000	2650	8490	9240	9840	6/12
M350	3500	5000	6000	7000	2750	8520	9270	9870	6/12
M375	3750	5000	6000	7000	2875	8560	9310	9910	6/12
M400	4000	5000	6000	7000	3050	8730	9480	10080	6/12
M425	4250	5000	6000	7000	3175	8770	9520	10120	6/12
M450	4500	5000	6000	7000	3300	8810	9560	10160	6/12
M475	4750	5000	6000	7000	3425	8850	9600	10200	6/6
M500	5000	5000	6000	7000	3550	8890	9640	10240	6/6
M550	5500	4750	5700	6600	3850	9090	9840	10440	3/6
M600	6000	4400	5400	6400	4100	9170	9920	10520	3/6

5-7t二级全自由门架 5-7t WIDE VIEW FULL FREE 2-STAGE MAST

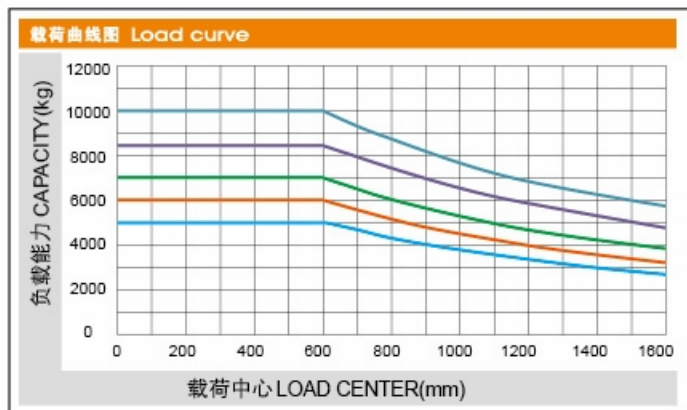
门架型号 Mast model	最大起升高度 Max. lifting height mm	承载能力 (载荷中心为600mm) (Kg) Load capacity (load center 600mm)			门架全高(mm) Overall mast height	自由起升高度(带挡货架) Free lifting height (with backrest) (mm)	自重 (kg) Service weight			门架倾角 Mast tilt angle (°) α/β
		CPCD50	CPCD60	CPCD70	CPCD50/60/70	CPCD50	CPCD60	CPCD70		
ZM250	2500	5000	6000	7000	2210	840	8470	9120	9820	6/12
ZM270	2700	5000	6000	7000	2310	940	8500	9150	9850	6/12
ZM300	3000	5000	6000	7000	2460	1090	8550	9200	9900	6/12
ZM330	3300	5000	6000	7000	2610	1240	8600	9250	9950	6/12
ZM350	3500	5000	6000	7000	2710	1340	8630	9280	9980	6/12
ZM375	3750	5000	6000	7000	2835	1465	8670	9320	10020	6/12
ZM400	4000	5000	6000	7000	3010	1640	8830	9480	10180	6/12
ZM425	4250	5000	6000	7000	3135	1765	8870	9520	10220	6/12
M450	4500	5000	6000	7000	3260	1890	8910	9560	10260	6/12
M475	4750	5000	6000	7000	3385	2015	8950	9600	10300	6/6
M500	5000	5000	6000	7000	3510	2140	8990	9640	10340	6/6
M550	5500	4750	5700	6700	3810	2440	9190	9840	10540	3/6
M600	6000	4400	5400	6400	4060	2690	9270	9920	10620	3/6

注: (1) 5-6t 不带挡货架自由起升 +465mm; Note: (1)5-6t: the free lifting height without backrest increased 465mm,
(2) 7t 不带挡货架自由起升 +310. (2)7t: the free lifting height without backrest increased 310mm,

三级全自由门架 WIDE VIEW FULL FREE 3-STAGE MAST

门架型号 Mast model	最大起升高度 Max. lifting height mm	承载能力 (载荷中心为600mm) (Kg) Load capacity (load center 600mm)			门架全高(mm) Overall mast height	自由起升高度(带挡货架) Free lifting height (with backrest) (mm)	自重 (kg) Service weight			门架倾角 Mast tilt angle (°) α/β
		CPCD50	CPCD60	CPCD70	CPCD50/60/70	CPCD50	CPCD60	CPCD70		
ZSM360	3600	4500	5600	6200	2335	910	9130	9780	10460	6/6
ZSM400	4000	4500	5600	6200	2470	1040	9190	9840	10520	6/6
ZSM435	4350	4500	5600	6200	2585	1156	9250	9900	10560	6/6
ZSM480	4800	4500	5600	6200	2740	1310	9440	10090	10750	6/6
ZSM500	5000	4500	5600	6200	2805	1380	9470	10120	10780	3/6
ZSM540	5400	4200	5300	6000	2940	1510	9540	10190	10950	3/6
ZSM600	6000	4000	5000	5500	3140	1710	9630	10280	11030	3/6
ZSM650	6500	3600	4300	4500	3405	1975	9740	10350	11250	3/6
ZSM700	7000	2800	3500	3700	3515	2085	4450	10500	11360	3/6

注: (1) 5-6t 不带挡货架自由起升 +465mm; Note: (1)5-6t: the free lifting height without backrest increased 465mm,
(2) 7t 不带挡货架自由起升. (2)7t: the free lifting height without backrest



CPD50 CPD60 CPD70 CPD85 CPD100

注：竖轴表示承载量，横轴表示载荷中心。载荷中心是从货叉正面计算起，标准载荷的基点是指负荷边长为1200毫米的立方体中心位置。当门架前倾、使用非标准货叉或装载超过正常宽度的负荷时，将会使承载量减少。通过负荷曲线图，能及时地了解标准门架在各种载荷中心时的承载能力。

Note: The vertical axis stands for load capacity and the horizontal axis stands for load center which is calculated from the front surface of the forks to the gravity of the standard load. the standard load means a cubic with 1200mm edge length. When mast is tilted forward, using non-standard forks or loading large goods, the load capacity will be reduced. The load capacity of standard mast at different load center can be known from this load chart.

8.5-10t 宽视野基本型门架 8.5-10t WIDE VIEW MAST

门架型号 Mast model	最大起升高度 Max. lifting height mm	承载能力(载荷中心为600mm) (Kg) Load capacity (load center 600mm)		门架全高(货叉落地)(mm) Overall mast height (at lowered)		自重 (kg) Service weight		门架倾角 Mast tilt angle (°) α/β
		CPCD85	CPCD100	CPCD85	CPCD100	CPCD85	CPCD100	
M250	2500	8500	10000	2450	2600	—	—	6/12
M270	2700	8500	10000	2550	2700	—	—	6/12
M300	3000	8500	10000	2700	2850	11000	12200	6/12
M330	3300	8500	10000	2850	3000	11060	12265	6/12
M350	3500	8500	10000	2950	3100	11100	12310	6/12
M375	3750	8500	10000	3075	3225	11140	12360	6/12
M400	4000	8500	10000	3250	3400	11350	12500	6/12
M425	4250	8500	10000	3375	3525	11400	12560	6/12
M450	4500	8500	10000	3500	3650	11440	12610	6/12
M475	4750	8200	10000	3625	3775	11490	12670	6/6
M500	5000	8200	10000	3750	3900	11540	12720	6/6
M550	5500	7850	9000	4050	4200	11780	12960	3/6
M600	6000	7400	8000	4300	4450	11870	13070	3/6

8.5-10t 二级全自由门架 8.5-10t WIDE VIEW FULL FREE 2-STAGE MAST

门架型号 Mast model	最大起升高度 Max. lifting height mm	承载能力(载荷中心为600mm) (Kg) Load capacity (load center 600mm)		门架全高(货叉落地)(mm) Overall mast height (at lowered)		自由起升高度(带挡货架)(mm) Free lifting height (with backrest)		自重 (kg) Service weight		门架倾角 Mast tilt angle (°) α/β
		CPCD85	CPCD100	CPCD85	CPCD100	CPCD85	CPCD100	CPCD85	CPCD100	
ZM250	2500	8500	10000	2450	2600	1060	1167	10740	—	6/12
ZM270	2700	8500	10000	2550	2700	1160	1267	11010	—	6/12
ZM300	3000	8500	10000	2700	2850	1310	1417	11125	12320	6/12
ZM330	3300	8500	10000	2850	3000	1460	1567	11170	12410	6/12
ZM350	3500	8500	10000	2950	3100	1560	1667	11230	12480	6/12
ZM375	3750	8500	10000	3075	3225	1685	1792	11290	12560	6/12
ZM400	4000	8500	10000	3250	3400	1860	1967	11540	12720	6/12
ZM425	4250	8500	10000	3375	3525	1985	2092	11610	12800	6/12
ZM450	4500	8500	10000	3500	3650	2110	2217	11680	12870	6/12
ZM475	4750	8200	10000	3625	3775	2235	2342	11750	12960	6/6
ZM500	5000	8200	10000	3750	3900	2360	2467	11820	13030	6/6
ZM550	5500	7850	9000	4050	4200	2660	2767	12120	13320	3/6
ZM600	6000	7400	8000	4300	4450	2910	3017	12260	13480	3/6

8.5-10t 三级全自由门架 8.5-10t WIDE VIEW FULL FREE 3-STAGE MAST

门架型号 Mast model	最大起升高度 Max. lifting height mm	承载能力(载荷中心为600mm) (Kg) Load capacity (load center 600mm)		门架全高(mm) Overall mast height		自由起升高度(带挡货架)(mm) Free lifting height (with backrest)		自重 (kg) Service weight		门架倾角 Mast tilt angle (°) α/β
		CPCD85	CPCD100	CPCD85	CPCD100	CPCD85	CPCD100	CPCD85	CPCD100	
ZSM360	3600	7500	8000	2450	2570	1090	1137	11390	12630	6/12
ZSM400	4000	7500	8000	2575	2700	1215	1267	11460	12690	6/12
ZSM435	4350	7500	8000	2700	2820	1340	1387	11530	12750	6/12
ZSM480	4800	7500	7500	2850	2970	1490	1537	11610	12810	6/6
ZSM500	5000	7500	7500	2950	3035	1590	1602	11680	12860	3/6
ZSM540	5400	7000	7000	3075	3225	1715	1792	11750	12930	3/6
ZSM600	6000	6400	6000	3375	3425	2015	1992	12090	13010	3/6
ZSM650	6500	5800	5600	3600	3590	2240	2157	12190	13300	3/6
ZSM700	7000	4800	—	3750	3855	2390	2422	12280	—	3/6

注：(1) 8.5t 不带挡货架自由起升 +213mm;
(2) 10t 不带挡货架。

Note: (1) 8.5t: the free lifting height without backrest increased 213mm,
(2) 10t: without backrest

注：上述表格中整车自重为配锡柴发动机时的重量。 Note: The service weight in the table is the weight of the truck assembled with XiChai engine.

可靠的专用仪表 Reliable special designed instrument

空档指示灯
Neutral indicator

预热指示灯
Preheating indicator

左转向灯
Left turning indicator

*座椅开关
* Seat switch

燃油低报警指示灯
Low fuel level alarm indicator

手制动指示灯
Hand brake indicator

备用
Backup



标准
Standard

(带*号为部分车型配置)
(* Means optional components)

小时表
Hourmeter

机油压力报警指示灯
Engine oil pressure alarm indicator

*油水分离报警指示灯
*Oil-water separation alarm indicator

右转向灯
Right turning indicator

仪表照明指示灯
Meter lighting indicator

*空滤阻塞报警指示灯
* Filter block alarm indicator

不充电报警指示灯
No charging alarm indicator

备用
Backup

■ 可靠的专用仪表将整车运行状态、故障检测等重要信息完整地显示出来，使操作者更直观、方便地了解车辆状态。

Reliable special meter displays the whole truck's working condition, fault detect and other important information completely which makes the operator master the whole truck condition directly and conveniently.

标准配置 Standard configuration

计时表 Hour meter	护顶架 Overhead guard
电喇叭 Horn	标准货叉 Standard fork
机油压力报警 Oil pressure alarm	空档开关 Neutral gear switch
二片多路阀 Control valve	液压回路滤清器 Hydraulic circuit oil filter
全液压力转向 Wholly hydraulic-powered steering	电液换向 Electro-hydraulic changing-over
橡胶踏板垫 Rubber pad	智能换挡 Intelligent shift
挡货架 Backrest	限速阀 Speed-limiting valve
倒车镜 Rear view mirror	油量表 Oil lever gauge
前组合灯 (LED信号灯) Front combined lamp (led light)	充电指示 Charging indicator
传动油滤清器 Transmission oil filter	宽视野门架 Wide view mast
发动机熄火装置 Engine flame out device	进气装置 Air intaking device
棘齿式驻车制动器 Ratchet type parking brake	花纹耐用轮胎 Durable tire with decorative pattern
水温表 Water temperature meter	起升和倾斜操纵杆 Lifting and tilting operating handles
随车工具 Driver's tool	牵引销 Traction pin
后组合灯 (LED) Rear combined lamp(led)	半悬浮座椅 Semi-suspension seat
倒车蜂鸣器 Reversing buzzer	液压油标尺 Hydraulic oil dipstick
倾斜油缸自锁阀 Self-locking tilt valve	护顶架防雨棚 Overhead guard rain cover
倾斜可调转向管柱 Tilt adjustable steering column	变矩器油标尺 Torque converter oil dipstick
后视镜 Back view mirror	组合仪表 Combined instrument

选用装置 Optional

驾驶室 Driver's cab	用户指定颜色 User-specified color
警示灯 Warning light	选用属具 Optional attachments
高排气装置 High air exhausting device	吊具 Sling
双空滤 Double air cleaner	全套LED灯 Full led light ass'y
全悬浮座椅 Suspension seat	电源总开关 Power switch
货叉加长套 Extended fork sleeve	倒车语音喇叭 Reversing voice speaker
暖风机 Warm air blower	通用钥匙 Universal key
实心轮胎 Solid tyre	超速10km/h报警 Overspeed 10km/h alarm
加宽货叉架 Widen fork carriage	电风扇 Electric fan
挡风玻璃 Wind shield	
净化消声器 Purifying muffler	
灭火消声器 Fire extinguisher muffler	
灭火器 Fire extinguisher	
后工作灯 Rear working light	
空调 (部分车型) Air conditioner (certain type)	
行车控制系统 travelling control system	
变矩器油温表 Torque converter oil temperature meter	
倾斜缸护套 Tilting cylinder sleeve	
转向缸护套 Steering cylinder sleeve	